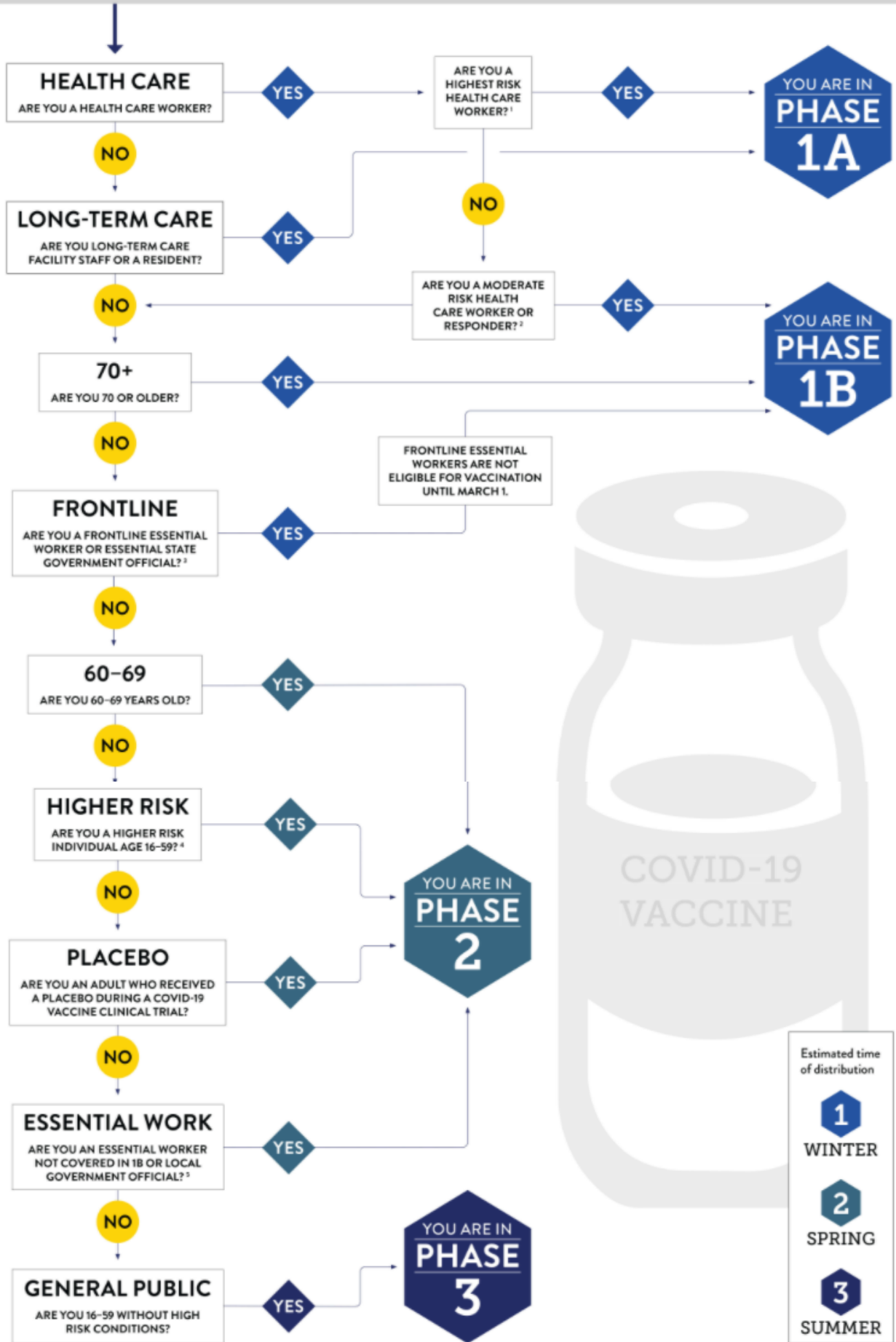


# VACCINE DISTRIBUTION

WHEN CAN YOU EXPECT TO GET THE COVID-19 VACCINE?



1) HIGHEST RISK HEALTH CARE WORKERS: People who have direct contact with COVID-19 patients for 15 minutes or more over a 24-hour period.

2) MODERATE RISK HEALTH CARE WORKERS AND RESPONDERS: Health care workers with less direct contact with COVID-19 patients (e.g. home health, hospice, pharmacy, dental, etc.) and EMS. Firefighters, police, COVID-19 response personnel, correctional workers, and funeral services.

3) FRONTLINE ESSENTIAL WORKERS: Frontline essential workers in education, food and agriculture, manufacturing, U.S. postal service, public transit and specialized transportation staff, grocery, public health, frontline essential human service workers, direct care providers for Coloradans experiencing homelessness, legislative and judicial branches of state government. Essential frontline journalists.

4) HIGHER RISK INDIVIDUALS: Adults with obesity, diabetes, chronic lung disease, significant heart disease, chronic kidney disease, cancer, or who are immunocompromised.

5) ESSENTIAL WORKERS: Details outlining who counts as a phase 2 essential worker are forthcoming.